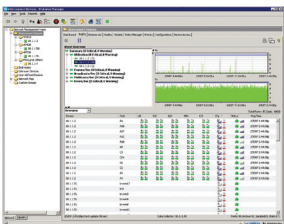


## **NEW** ProCurve Manager Plus 2.3

ProCurve Manager Plus 2.3 is a secure, advanced Windows® -based network management platform that allows administrators to configure, update, monitor, and troubleshoot ProCurve devices centrally with easy-to-use information-rich screens.

The administrator can enable policies that will take automated actions in response to network events from a variety of sources.

The software can run on its own or with HP OpenView Network Node Manager integration, allowing administrators to monitor multivendor networks while leveraging ProCurve-specific Adaptive EDGE management functions. ProCurve Manager Plus can be enhanced with plug-in modules, such as ProCurve Network Immunity Manager, Identity Driven Manager, and Mobility Manager. ProCurve Manager Plus can also integrate base management for third-party devices.



- NEW** ProCurve Manager Plus 2.3 upgrade from PCM+ 1.6 or newer (J9056A)
- NEW** ProCurve Manager Plus 2.3 50-device license (J9057A)
- NEW** ProCurve Manager Plus 2.3 upgrade +100-device license (J9058A)
- NEW** ProCurve Manager Plus 2.3 unlimited-device license (J9059A)

# ProCurve Manager Plus 2.3

## Features and benefits

### Additional information

ProCurve Manager Plus 2.3 has all of the features of ProCurve Manager 2.3, along with:

- **In-depth traffic analysis:** An integrated, low-overhead traffic monitor interface shows detailed information on traffic throughout the network. Using enhanced traffic analysis protocols such as XRMON and sFlow, the user can monitor input and output traffic levels per device, segments with the highest traffic, or even the top users within a network segment.

**NEW Policy creation and enforcement:** ProCurve Manager Plus 2.3 brings the ability to create policies, set alerts, and take action to enforce network or device policies. Network threats, bandwidth, or link issues can be mitigated by proactive policies and enforced with alerts and actions.

- **Easier configuration management:** Changes in configuration are tracked and logged, and archived configurations can be applied to one or many devices. Configurations can be compared over time or between two devices, with the differences highlighted for the user.
- **Advanced VLAN management:** A new, easy-to-use VLAN management interface allows the user to create and assign VLANs across the entire network, without having to access each network device individually.

**NEW Audit change reporting:** ProCurve Manager Plus now provides a configuration change log for all configuration changes. The audit log is provided to help customers meet compliance reporting regulations.

- **Device software updates:** ProCurve Manager Plus 2.3 automatically obtains new device software images from ProCurve and updates devices, allowing the user to download the latest version or choose the desired version. Updates can be scheduled easily across large groups of devices, all at user-specified times.

- **Investment protection:** The modular software architecture of ProCurve Manager Plus 2.3 will allow ProCurve to offer network administrators add-on software solutions that complement their needs.

- **SNMPv3:** ProCurve Manager uses the secure SNMPv3 management protocol to help ensure the privacy of management data between the management server and the managed devices. It is integrated with HP OpenView's Network Node Manager implementation of SNMPv3.

- **HP OpenView Network Node Manager Windows® integration:**

– **Installation:** The option to integrate with HP OpenView Network Node Manager (NNM) Windows may be selected at installation. ProCurve Manager Plus 2.3 will then integrate with the 6.41 and 7.x versions of NNM.

– **Auto-discovery coordinated with OpenView Network Node Manager:** When integrated with NNM, ProCurve Manager Plus 2.3 will use NNM's discovery database and then retrieve additional ProCurve device data for the ProCurve Manager Plus database.

– **Topology mapping:** When integrated with NNM, ProCurve Manager Plus will provide ProCurve device icons to the NNM topology map. The NNM topology map will be the primary mapping mechanism, with the option to launch the ProCurve Manager map views as well. This allows easy identification of ProCurve devices and allows the user, via right mouse button selection, to retrieve a ProCurve Manager Plus map of all selected ProCurve devices.

# ProCurve Manager Plus 2.3

- **Network management security:**

- **Secure shell for telnet and command-line interface (CLI):** Secure shell (SSH) provides encrypted data when ProCurve Manager Plus 2.3 is accessing a device via telnet and CLI. This helps ensure that changes to network devices are safe from tampering by hackers.

- **RADIUS authentication of network management administrators:** ProCurve Manager Plus 2.3 can be configured to use the RADIUS industry-standard protocol to authenticate network management administrators. This authentication approach allows for simplified and standardized user administration.

- **Advanced monitoring and diagnosis:**

- **Inter-switch consistency checking between connected ports:** Switches connected to one another in a network should have consistent configurations on each side of the connected ports. ProCurve Manager Plus 2.3 checks these parameters to help ensure the proper reliable behavior occurs over these links. Parameters checked include VLAN ID and name, full-duplex/half-duplex, VLAN tagged vs. untagged packets, QoS, and priorities. These checks save administrator diagnosis time and ensure reliable data exchange.

- **BootROM consistency check:** ProCurve Manager Plus 2.3 checks BootROMs during the firmware update process to ensure that the target firmware has the required BootROM before updating of the firmware is allowed. This prevents network downtime and alerts administrators of needed upgrades before errors occur.

- **Find Port diagnostic capabilities:** ProCurve Manager Plus 2.3 provides the ability to find a switch port when given an IP or MAC address. This function can be initiated manually by the administrator or automatically by an external event. This enables administrators to automatically isolate problems to specific ports and take automated corrective action, saving time and reducing network downtime.

- **Enable port mirroring and remote port mirroring on select ProCurve switches:** ProCurve Manager Plus 2.3 can set port mirroring and remote port mirroring on select advanced ProCurve switches.

- **Friendly port names:** ProCurve Manager Plus 2.3 allows the administrator to set and display friendly port names.

- **Command-line interface:**

- **CLI command policies saved by name:** Configuration policies represented by a series of CLI commands can be saved by a unique name to be executed again for repetitive tasks.

- **CLI policies can be triggered by external events:** Configuration policies represented as a series of CLI-like commands can be automatically executed when configurable external events trigger them.

- **Industry-leading warranty**

- 90-day media warranty and lifetime free phone support

# ProCurve Manager Plus 2.3

## Services

Check [www.hp.com/go/procurveservices](http://www.hp.com/go/procurveservices) for part numbers and service-level descriptions. For details about services and response times in your area, please contact your local HP sales office.

## Accessories

**ProCurve Identity Driven Manager 2.3 base product – 500-user license (J9012A)**

**ProCurve Identity Driven Manager 2.3 base product (upgrade from 1.0) (J9013A)**

**ProCurve Identity Driven Manager 2.3 – add 2,000 users license (J9014A)**

**ProCurve Network Immunity Manager 1.0 50-device license (J9060A)**

**ProCurve Network Immunity Manager 1.0 +100-device license (J9061A)**

**ProCurve Network Immunity Manager 1.0 unlimited-device license (J9062A)**

**ProCurve Mobility Manager 2.0 50-device license (J9074A)**

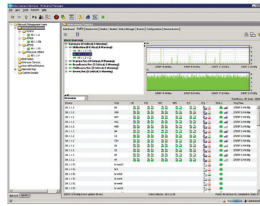
**ProCurve Mobility Manager 2.0 +100-device license (J9075A)**

**ProCurve Mobility Manager 2.0 unlimited-device license (J9076A)**

**ProCurve Mobility Manager 2.0 upgrade from ProCurve Mobility Manager 1.1 (J9081A)**

# ProCurve Manager Plus 2.3

## Specifications



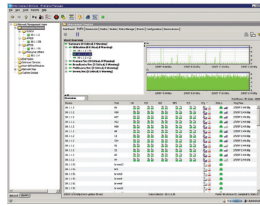
### ProCurve Manager Plus 2.3 upgrade from PCM+ 1.6 or newer (J9056A)

### ProCurve Manager Plus 2.3 50-device license (J9057A)

	For networks having 50 to 250 managed devices, ProCurve recommends the following:	For networks having 50 to 250 managed devices, ProCurve recommends the following:
<b>Minimum system hardware</b>	2.0 GHz Intel® Pentium® 4 or equivalent processor 2 GB RAM memory 10 GB storage 1000 MB NIC for PCM+ as a standalone application, assuming a dedicated server	2.0 GHz Intel Pentium 4 or equivalent processor 2 GB RAM memory 10 GB storage 1000 MB NIC for PCM+ as a standalone application, assuming a dedicated server
<b>Recommended system hardware</b>	3.0 GHz Intel Pentium 4 or equivalent processor 3 GB RAM memory 40 GB storage 1000 MB NIC for PCM+ assuming a dedicated server, and including ProCurve Identity Driven Manager, Mobility Manager, and Network Immunity Manager on the same server	3.0 GHz Intel Pentium 4 or equivalent processor 3 GB RAM memory 40 GB storage 1000 MB NIC for PCM+ assuming a dedicated server, and including ProCurve Identity Driven Manager, Mobility Manager, and Network Immunity Manager on the same server
<b>Recommended software</b>	Microsoft Windows 2003 Server Windows XP SP2 Windows XP Professional SP2	Microsoft Windows 2003 Server Windows XP SP2 Windows XP Professional SP2
	For networks having 250 to 2,000 managed devices, ProCurve recommends the following:	For networks having 250 to 2,000 managed devices, ProCurve recommends the following:
<b>Minimum system hardware</b>	3.0 GHz Intel Pentium 4 or equivalent processor 3 GB RAM memory 40 GB storage 1000 MB NIC for PCM+ as a standalone application, assuming a dedicated server	3.0 GHz Intel Pentium 4 or equivalent processor 3 GB RAM memory 40 GB storage 1000 MB NIC for PCM+ as a standalone application, assuming a dedicated server
<b>Recommended system hardware</b>	Intel Xeon® or equivalent processor 4 GB RAM memory 80 GB storage 1000 MB NIC for PCM+ assuming a dedicated server, and including ProCurve Identity Driven Manager, Mobility Manager, and Network Immunity Manager on the same server	Intel Xeon or equivalent processor 4 GB RAM memory 80 GB storage 1000 MB NIC for PCM+ assuming a dedicated server, and including ProCurve Identity Driven Manager, Mobility Manager, and Network Immunity Manager on the same server
<b>Recommended software</b>	Microsoft Windows 2003 Server Windows XP SP2 Windows XP Professional SP2	Microsoft Windows 2003 Server Windows XP SP2 Windows XP Professional SP2
<b>Browsers</b>	Microsoft Internet Explorer version 5.0 or later	Microsoft Internet Explorer version 5.0 or later
<b>Supported platforms</b>	HP OpenView Network Node Manager Windows version 6.41 or 7.01 or 7.5	HP OpenView Network Node Manager Windows version 6.41 or 7.01 or 7.5
<b>Additional requirements</b>	Note: ProCurve Network Immunity Manager when loaded on PCM+ 2.3 can sample up to 500 managed ports using sFlow or XRMON.	Note: ProCurve Network Immunity Manager when loaded on PCM+ 2.3 can sample up to 500 managed ports using sFlow or XRMON.
<b>Notes</b>	Additional processing power may be necessary for extensive traffic monitoring. Unlimited license means that ProCurve does not impose a limit on the number of devices attached to the network as a condition of the license. Some degradation in performance may be expected the greater the number of devices attached to the network. Specifications subject to change	Additional processing power may be necessary for extensive traffic monitoring. Unlimited license means that ProCurve does not impose a limit on the number of devices attached to the network as a condition of the license. Some degradation in performance may be expected the greater the number of devices attached to the network. Specifications subject to change

# ProCurve Manager Plus 2.3

## Specifications



	<b>ProCurve Manager Plus 2.3 upgrade +100-device license (J9058A)</b>	<b>ProCurve Manager Plus 2.3 unlimited-device license (J9059A)</b>
	For networks having 50 to 250 managed devices, ProCurve recommends the following:	For networks having 50 to 250 managed devices, ProCurve recommends the following:
<b>Minimum system hardware</b>	2.0 GHz Intel Pentium 4 or equivalent processor 2 GB RAM memory 10 GB storage 1000 MB NIC for PCM+ as a standalone application, assuming a dedicated server	2.0 GHz Intel Pentium 4 or equivalent processor 2 GB RAM memory 10 GB storage 1000 MB NIC for PCM+ as a standalone application, assuming a dedicated server
<b>Recommended system hardware</b>	3.0 GHz Intel Pentium 4 or equivalent processor 3 GB RAM memory 40 GB storage 1000 MB NIC for PCM+ assuming a dedicated server, and including ProCurve Identity Driven Manager, Mobility Manager, and Network Immunity Manager on the same server	3.0 GHz Intel Pentium 4 or equivalent processor 3 GB RAM memory 40 GB storage 1000 MB NIC for PCM+ assuming a dedicated server, and including ProCurve Identity Driven Manager, Mobility Manager, and Network Immunity Manager on the same server
<b>Recommended software</b>	Microsoft Windows 2003 Server Windows XP SP2 Windows XP Professional SP2	Microsoft Windows 2003 Server Windows XP SP2 Windows XP Professional SP2
	For networks having 250 to 2,000 managed devices, ProCurve recommends the following:	For networks having 250 to 2,000 managed devices, ProCurve recommends the following:
<b>Minimum system hardware</b>	3.0 GHz Intel Pentium 4 or equivalent processor 3 GB RAM memory 40 GB storage 1000 MB NIC for PCM+ as a standalone application, assuming a dedicated server	3.0 GHz Intel Pentium 4 or equivalent processor 3 GB RAM memory 40 GB storage 1000 MB NIC for PCM+ as a standalone application, assuming a dedicated server
<b>Recommended system hardware</b>	Intel Xeon or equivalent processor 4 GB RAM memory 80 GB storage 1000 MB NIC for PCM+ assuming a dedicated server, and including ProCurve Identity Driven Manager, Mobility Manager, and Network Immunity Manager on the same server	Intel Xeon or equivalent processor 4 GB RAM memory 80 GB storage 1000 MB NIC for PCM+ assuming a dedicated server, and including ProCurve Identity Driven Manager, Mobility Manager, and Network Immunity Manager on the same server
<b>Recommended software</b>	Microsoft Windows 2003 Server Windows XP SP2 Windows XP Professional SP2	Microsoft Windows 2003 Server Windows XP SP2 Windows XP Professional SP2
<b>Browsers</b>	Microsoft Internet Explorer version 5.0 or later	Microsoft Internet Explorer version 5.0 or later
<b>Supported platforms</b>	HP OpenView Network Node Manager Windows version 6.41 or 7.01 or 7.5	HP OpenView Network Node Manager Windows version 6.41 or 7.01 or 7.5
<b>Additional requirements</b>	Note: ProCurve Network Immunity Manager when loaded on PCM+ 2.3 can sample up to 500 managed ports using sFlow or XRMON.	Note: ProCurve Network Immunity Manager when loaded on PCM+ 2.3 can sample up to 500 managed ports using sFlow or XRMON.
<b>Notes</b>	Additional processing power may be necessary for extensive traffic monitoring. Unlimited license means that ProCurve does not impose a limit on the number of devices attached to the network as a condition of the license. Some degradation in performance may be expected the greater the number of devices attached to the network. Specifications subject to change	Additional processing power may be necessary for extensive traffic monitoring. Unlimited license means that ProCurve does not impose a limit on the number of devices attached to the network as a condition of the license. Some degradation in performance may be expected the greater the number of devices attached to the network. Specifications subject to change



## For more information

To learn more about ProCurve  
Networking, please visit  
**[www.procurve.com](http://www.procurve.com)**

© 2007, 2008 Hewlett-Packard Development Company, L.P. The information contained herein is subject to change without notice. The only warranties for HP products and services are set forth in the express warranty statements accompanying such products and services. Nothing herein should be construed as constituting an additional warranty. HP shall not be liable for technical or editorial errors or omissions contained herein.

Intel, Pentium, and Xeon are trademarks or registered trademarks of Intel Corporation or its subsidiaries in the United States and other countries. Microsoft and Windows are U.S. registered trademarks of Microsoft Corporation.

4AA1-6303ENUC, April 2008

