

## ProCurve Mobility Manager 2.0

ProCurve Mobility Manager 2.0 provides a single point in which to plan, deploy, manage, and monitor a ProCurve wireless LAN. As a plug-in software module for ProCurve Manager Plus, this powerful tool provides visualization of predictive RF coverage and location of wireless LAN infrastructure, unmanaged (rogue) access points, and wireless clients as part of an overlay to imported floor plans. Monitoring network health is easy with an integrated, single-screen dashboard providing device or network-wide wireless network utilization and client activity. With ProCurve Mobility Manager 2.0 integrated seamlessly into ProCurve Manager Plus, network administrators can easily manage their wireless and wired network from a common, unified network management console.



ProCurve Mobility Manager 2.0 50-Device License (J9074A)  
ProCurve Mobility Manager 2.0 +100-Device License (J9075A)  
ProCurve Mobility Manager 2.0 Unlimited Device License (J9076A)  
ProCurve Mobility Manager 2.0 Upgrade (J9081A)

# ProCurve Mobility Manager 2.0

## Features and benefits

In addition to the benefits offered by ProCurve Manager Plus, ProCurve Mobility Manager enables the following wireless LAN management functionality:

- **Wireless LAN planning and deployment:**

- **Site plan:** simplifies planning a wireless LAN deployment by displaying a graphical representation of the desired coverage area. Import floor plans, and identify physical dimensions and obstacles such as external and internal walls and their RF properties.

- **RF coverage prediction (heat map):** simple drag and drop of ProCurve wireless devices onto a site plan enables network designers to visualize the effect device placement and configuration of ProCurve access points and radio ports have on the desired coverage area. Adjustments to variables, including radio transmit power, channel, antenna type, and orientation, provide greater design accuracy before the physical installation of the wireless network infrastructure. ProCurve Mobility Manager saves each device configuration as part of the site plan. Once ProCurve Manager Plus discovers the newly installed devices, the network administrator can modify or simply apply the saved configurations to the new wireless devices.

- **Auto-placement wizard:** simplifies placement and configuration of ProCurve wireless infrastructure within a specified section of a site plan. Select the ProCurve device type, radio configuration, and minimum desired data rate, and the tool automatically determines the number of devices, physical location, and device configuration parameters such as transmit power and channel selection.

- **Wireless device planner report:** reduces the time it takes to install a wireless LAN by providing a detailed, accurate Bill of Materials report, which includes a list of devices, their required x and y coordinates, and physical orientation within the floor plan. Network designers can easily add design notes, device configuration, and other installation instructions as part of the report, all helping to reduce the cost of installation.

- **Wireless LAN monitoring and reporting:**

- **Single-screen wireless LAN dashboard:** provides charting of wireless network statistics for a single device or a user-defined group of ProCurve access points and radio ports. ProCurve Mobility Manager collects and displays up to an hour of historical network statistics, including status of discovered infrastructure, wireless client associations, network traffic type, bandwidth utilization, and traffic errors.

- **Site view:** using site plans stored or imported into ProCurve Mobility Manager, the site view function simplifies monitoring and troubleshooting by displaying wireless network coverage, physical location and activity of wireless clients, and both managed and unmanaged (possible rogue access points) wireless devices operating within the wireless network. More network detail is readily available by simply clicking on a client or access point icon for information such as MAC and IP address, client association status, signal strength, and wireless security settings.

- **Reporting tools:** includes wireless diagnostic and network activity reporting capabilities to troubleshoot or analyze client activity and infrastructure performance, in addition to reports available as part of ProCurve Manager Plus. Network administrators can quickly build customized reports, at a device or group level, by choosing from a comprehensive list of device, radio, or network parameters to generate reports such as client connectivity history or bandwidth utilization.

# ProCurve Mobility Manager 2.0

- **Network security:**

- **Rogue device detection:** alerts administrators to untrusted devices discovered via radio-frequency scans (using ProCurve wireless devices)
- **Centralized application of security policies:** helps ensure consistent application of a business's security policies via template-based group configuration of wireless device security settings (including encryption keys and SSIDs)
- **Automated configuration checking:** allows administrators to choose to be alerted to any device configuration changes, helping to mitigate potential gaps in security policy

- **Configuration management:**

- **Device configuration:** simply select a ProCurve wireless device from a list of auto-discovered network infrastructure or click a wireless device icon on the site view map to view or configure device, radio, and security parameters
- **Group-based configuration and software management:** allows administrators to centrally assign managed devices to groups and apply configuration changes or software updates either real-time or on a scheduled basis

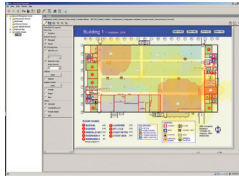
## **Industry-leading warranty**

- 90-day media warranty (software)

## Services

Check [www.hp.com/go/procurveservices](http://www.hp.com/go/procurveservices) for part numbers and service-level descriptions. For details about services and response times in your area, please contact your local HP sales office.

# Specifications



**ProCurve Mobility Manager 2.0  
50-Device License (J9074A)**

**ProCurve Mobility Manager 2.0  
+100-Device License (J9075A)**

**ProCurve Mobility Manager 2.0  
Unlimited Device License  
(J9076A)**

**ProCurve Mobility Manager 2.0  
Upgrade (J9081A)**

---

**Notes**

Requires ProCurve Manager Plus version 2.3 or greater. For system requirements, please refer to the ProCurve Manager Plus specifications list.

Supported devices:

- ProCurve Access Point 530
- ProCurve Access Point 420
- ProCurve Radio Port 210, 220, and 230
- ProCurve Wireless Edge Services xl Module
- ProCurve Wireless Edge Services xl Module
- ProCurve wireless antennas

Additional processing power may be necessary for extensive traffic monitoring.

Unlimited license means that ProCurve does not impose a limit on the number of devices attached to the network as a condition of the license.

Some degradation in performance may be expected the greater the number of devices attached to the network.

Specifications subject to change

---

## For more information

To learn more about ProCurve  
Networking, please visit  
**[www.procurve.com](http://www.procurve.com)**

© 2007 Hewlett-Packard Development Company, L.P. The information contained herein is subject to change without notice. The only warranties for HP products and services are set forth in the express warranty statements accompanying such products and services. Nothing herein should be construed as constituting an additional warranty. HP shall not be liable for technical or editorial errors or omissions contained herein.

4AA1-5788ENUC, November 2007

